

Supervisor

Are you a PhD supervisor or about to be one?
Have you considered how your PhD student could work with non-academic partners?

PhD students are increasingly interested in non-academic collaboration and value the role of supervisors in supporting this. Indeed, many PhD students select their supervisor on their ability to support business collaborations. Our research has found that the following are key to a successful relationship between PhD student and business collaborators:

- **Regular communication and a shared language**
- **Shared objectives and clear project plan which accounts for risks**
- **Placements and/or opportunities for PhD students to spend time at business premises**

Our research also found that the majority of academics in the SeNSS network are interested in supporting PhD candidates with business collaboration but recognise there are gaps in their knowledge or ability to do so. This checklist aims to provide some prompts to supervisors supporting PhD students with business collaboration.



WHY DOES YOUR STUDENT NEED OR WANT TO COLLABORATE?

- To test a methodology?
- To get access to data?
- To test a theory?
- To improve employability either within or outside of academia?

- ✓ **Get clear on how a collaboration will add value to your student's core PhD thesis**

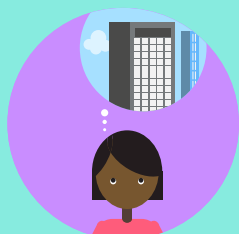


IS THERE A POTENTIAL IMPACT PATHWAY?

- Will your student's research achieve real world impact? If so, how?
- What support do they need to realise this impact?
- What challenges might they face to achieving impact?
- What is your role as supervisor in supporting this pathway?

- ✓ **Invite your PhD student to consider the 'impact' potential of their work i.e how their research could change or benefit the economy, society, culture, public policy or services, health, the environment or quality of life, beyond academia**

Supervisor cont.



WHY SHOULD A BUSINESS COLLABORATE WITH YOUR PHD STUDENT?

What is in it for the business? How will they benefit?

Is your student able to articulate why their research would be of interest to a business using appropriate, accessible language?

- ✓ **Encourage your PhD student to consider the needs of a collaborator**



DOES THE PHD STUDENT HAVE THE MOST APPROPRIATE SUPERVISION TEAM?

Does the research question necessitate a business supervisor?

Do you have any business contacts that can be approached?

Do you have any contacts that would add value to the supervision team, especially around brokering or developing business contacts?

- ✓ **Consider how you can provide the best team of supervisors for your PhD student**



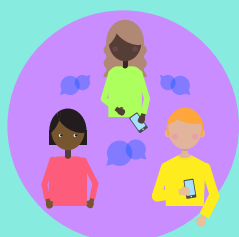
IS YOUR PHD STUDENT AWARE OF THE SUPPORT AVAILABLE TO HELP THEM BUILD A COLLABORATION?

Are you able to put them in contact with institutional knowledge exchange teams and impact officers?

Does your PhD student need any specific skills to enable them to collaborate effectively? Is there any training they can access?

Are there any sources of funding within your institution to support such collaboration and is your PhD student aware of them?

- ✓ **Ensure the PhD student is signposted to relevant services**



ARE THE LINES OF COMMUNICATION CLEAR BETWEEN PHD STUDENT, SUPERVISOR AND COLLABORATOR?

Who needs to meet and how often?

What is your role as supervisor in managing the relationship between researcher and collaborator?

- ✓ **Agree a communication protocol**